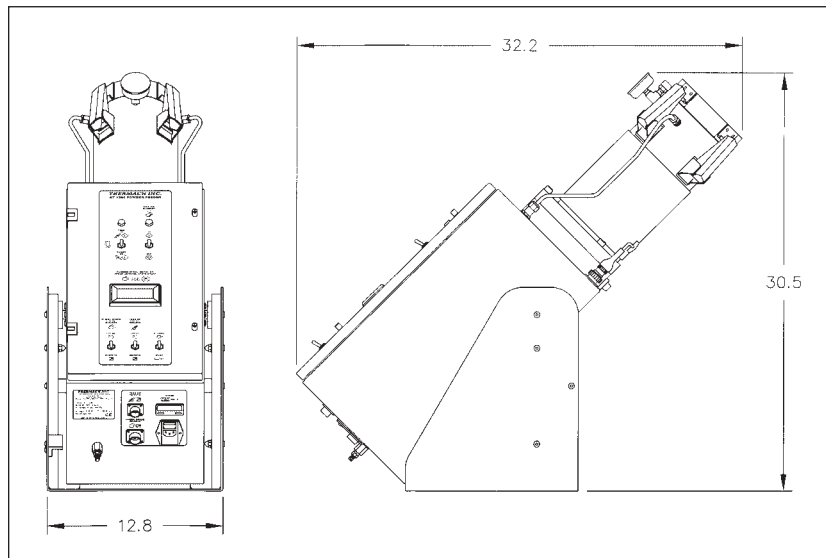


Recognize QUALITY



Specifications:

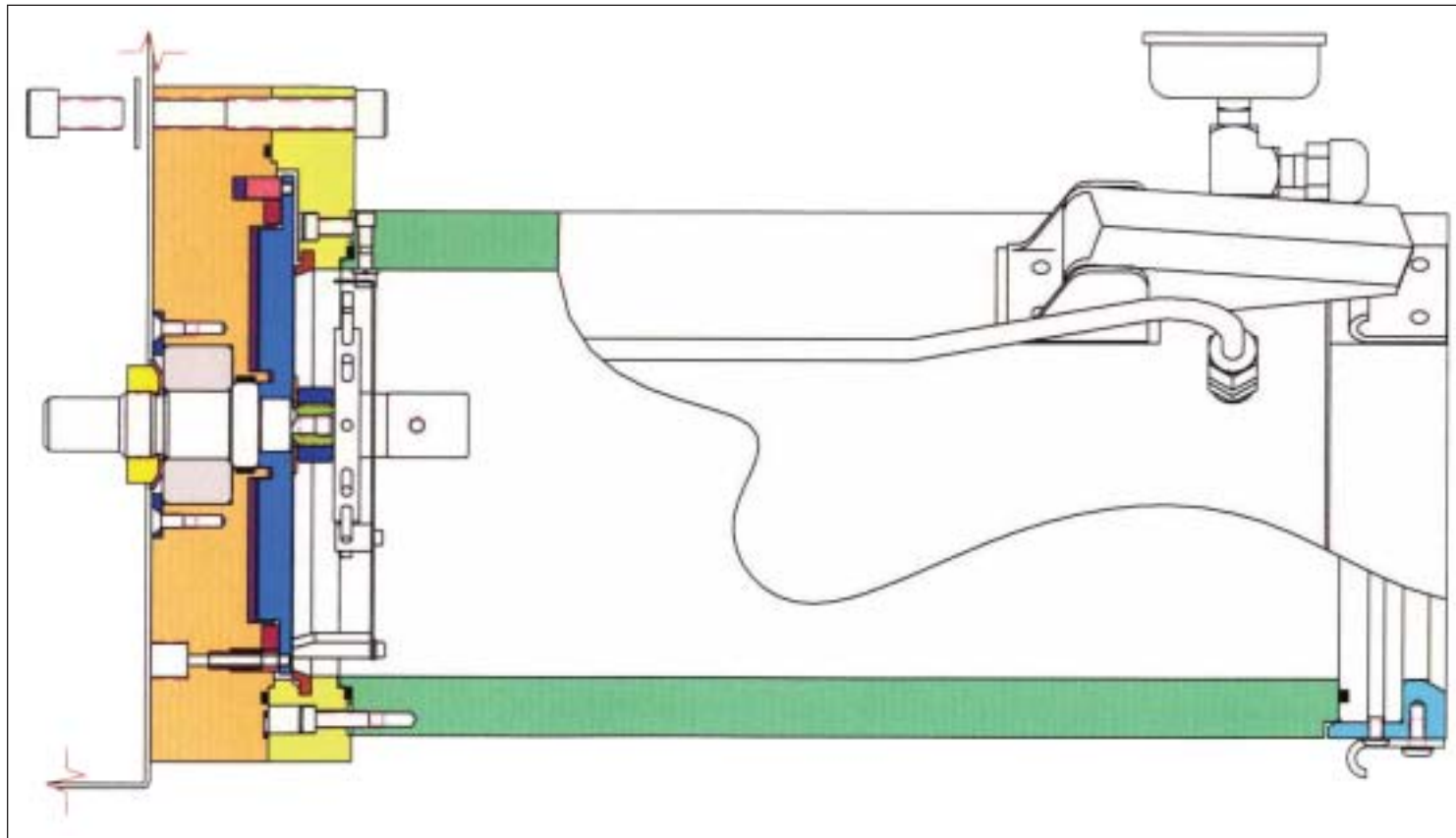
Actual weight: 97 lbs. (44kg)
Crated weight: 200 lbs. (94kg)

Power Requirements:

120 volts AC
60/50 Hz
3 amps

Wheel Speeds Available:

0-15 rpm (standard)
0-32 rpm (upon request)



AT-1200 canister cross section assembly.

THERMACH INC.
THERMAL SPRAY AND MACHINING

Ship: W8921 US Hwy. 10
Medina, WI 54951
Mail: PO Box 1995
Appleton, WI 54912

Phone: 920-779-4299
Fax: 920-779-4452

Email: davelewis@thermach.com
trudyjohnson@thermach.com
www.thermach.com

Distributed by Astro Alloys Inc. Houston, Texas 1-877-937-3838



AT-1200 ROTARY POWDER FEEDER

Achieve unmatched quality and dependability with Thermach's **AT-1200 Rotary Powder Feeder**. Utilizing proven technology and electrical controls, the **AT-1200** is inexpensive and reliable. The heart of the **AT-1200's** electrical controls is the digital closed-loop controller, offering precise and accurate wheel speed. The **AT-1200** is also capable of remote control by a PLC or computer, allowing wheel speed to be controlled remotely by a 0-10VDC or 4-20mA signal. All machined parts are manufactured and fully inspected to guarantee the highest quality and functionality. Additionally, we manufacture **AT-1200** consumable parts to be fully compatible with other common powder feeders, making Thermach Inc. an excellent source for powder feeder spare parts.

THERMACH INC.
THERMAL SPRAY AND MACHINING

Recognize...

THE QUALITY WORKMANSHIP OF THERMACH INC.

Developing and manufacturing world-class products for our customers is the driving force behind Thermach Inc. The **AT-1200 Rotary Powder Feeder** is no exception. Proven technology and superior electrical controls make the **AT-1200** a highly efficient and versatile piece of equipment for aerospace, transportation and other manufacturing industries.

SERVICE

Thermach Inc. offers a full range of services, including in-house set-up and product support, custom equipment and part design, and repair of all brands of thermal spray parts and machinery.

COMMITMENT

Thermach's commitment to quality ensures the latest technology and production methods are used in their manufacturing products. Because of this, Thermach Inc. is fast becoming a leader in the thermal spray and machining industry.

REPLACEMENT PARTS INCLUDE:



Powder Wheels



Tamper Assemblies



Maintenance Parts



Drive Shafts



Drive Shaft Bearings



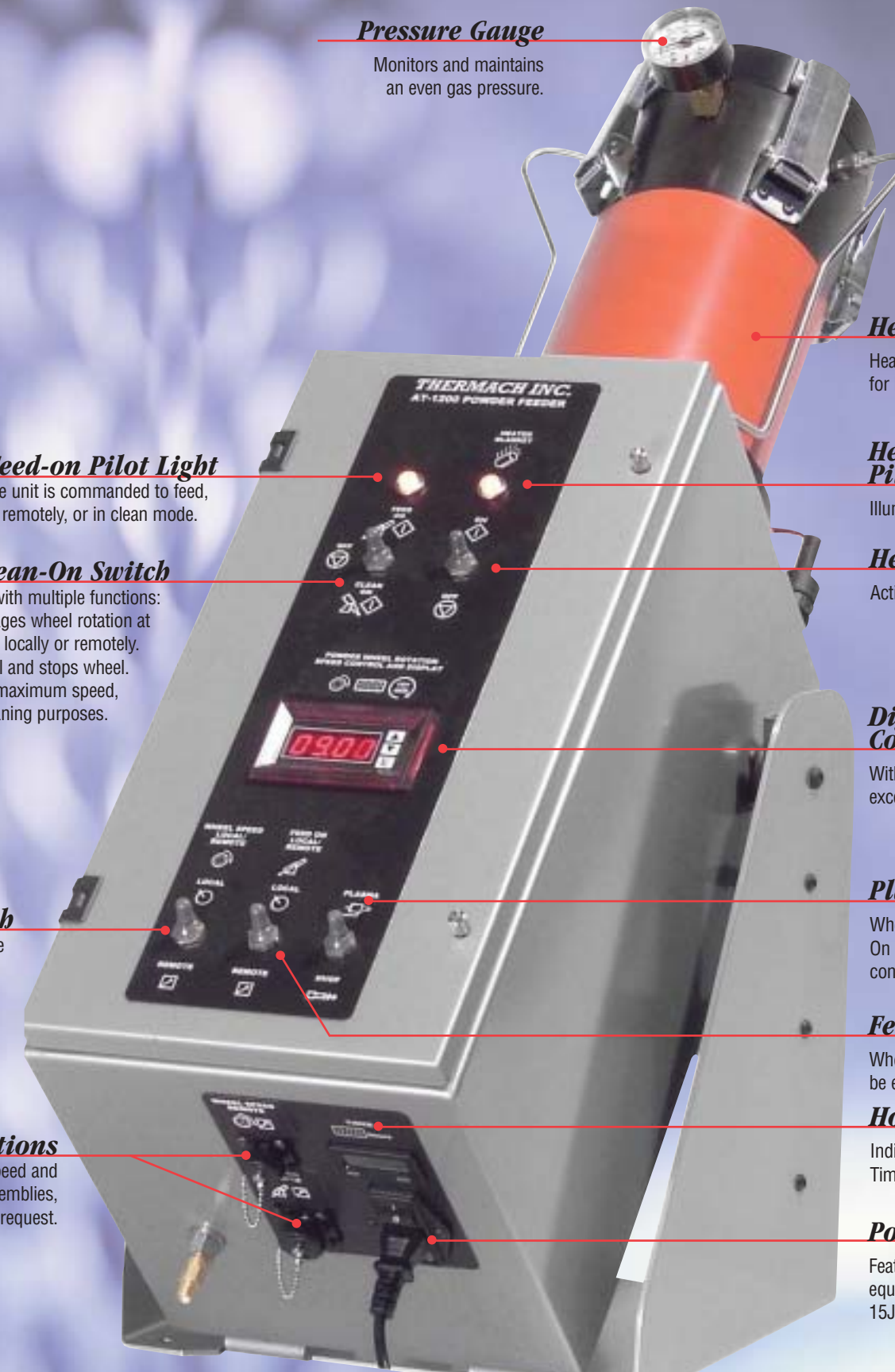
Dump Valves



Powder Hoses



Heater Blankets



Pressure Gauge

Monitors and maintains an even gas pressure.

Heater Blanket

Heats contents of the canister to keep the powder dry, for better feed capability.

Heater Blanket Pilot Light

Illuminates whenever the heater blanket is energized.

Heater Blanket On/Off Switch

Activates the heater blanket.

Digital Wheel Speed Controller and Display

With the drive, motor, and encoder, this controller offers excellent powder wheel speed regulation of 0.05% of set speed.

Plasma/HVOF Switch

When in Plasma mode, the canister is pressurized only in Feed-On mode. In HVOF mode, pressure in the canister is maintained constantly, to prevent back flow of combustion gas from the gun.

Feed-On Local/Remote

When switched to Remote, Feed-On may be engaged by a remote device.

Hour Meter

Indicates total time of operations in hours, minutes, and seconds. Timer is active whenever the unit is in Feed-on or Clean mode.

Power Connector

Features a premium performance RFI filter design to bring digital equipment into compliance with EN55022, level B and FCC Part 15J, Class B emission limits.

Feed-on Pilot Light

Illuminates whenever the unit is commanded to feed, either locally, remotely, or in clean mode.

Feed-On/Clean-On Switch

A three-way switch with multiple functions:

Feed On: Engages wheel rotation at set speed either locally or remotely.

Off: Disengages wheel speed control and stops wheel.

Clean On: Engages wheel rotation to maximum speed, for cleaning purposes.

Wheel Speed Local/Remote Switch

When switched to Remote, wheel speed may be controlled remotely with an isolated 0-10 VDC signal.

Electrical Connections

Allows for easy access of remote wheel speed and remote Feed-On. Features cable assemblies, available upon request.