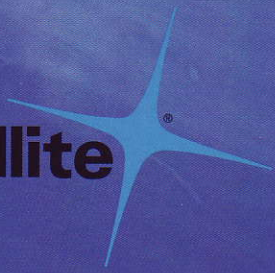


Stellite



Jet

Kote

III

Distributed by Astro Alloys Inc. Houston, Texas 1-877-937-3838

SOLVING INDUSTRY'S TOUGHEST PROBLEMS



The **Jet Kote® III** is the latest addition to our Jet Kote family of high performance HVOF systems. The Jet Kote III is the next generation of our Jet Kote® IIA. The Jet Kote® IIA was the standard for over 13 years, especially in aerospace applications and installations requiring a turn-key, highly repeatable coating process.

The **Jet Kote® III** was designed with operator convenience and efficiency in mind. It combines the high quality coatings Jet Kote® is known for with consistent, repeatable performance.

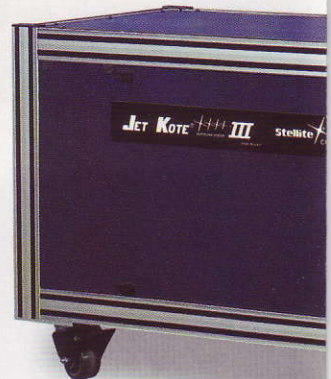
The **Jet Kote® III** consists of a control console, Model JK® 3000 torch, heat exchanger and powder feeder. All elements of the system are designed to work together to provide optimum performance.

Broad Range of Material Capabilities

A wide variety of specifically designed powders are available through Stellite Coatings and their distributors to provide optimal performance for the Jet Kote® systems. Approximately 60 powders are currently available. See a partial listing on the back of this brochure or a Stellite representative for more information. Stellite Coatings powder production is certified to QS 9000 and ISO 9001.

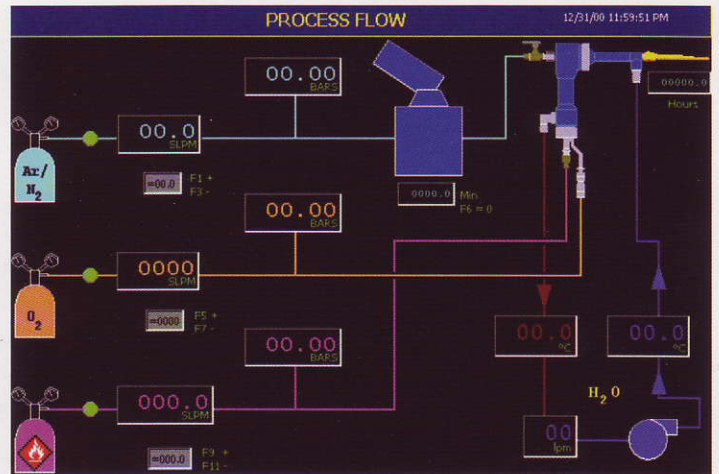
Deposit Efficiency and Spray Rates

The Jet Kote® III is capable of spraying materials up to 20 lbs/hr. High D.E. Rates make this one of the most efficient spray systems available. Deposit efficiencies up to 70% are possible, resulting in deposit rates of up to 0.200 in/ft₂/hr. Many competitive systems average 25% to 35% deposit efficiency, with the majority of the deposit material bouncing off the target, causing operating costs to increase.



FEATURES INCLUDE:

- Designed & built in accordance with CE Standards
- Latest mass flow control technology
- Gas saver mode (Partial flow)
- Online storage of spray programs
- Sharp, graphical color displays of all process parameters
- Advanced monitoring of all process parameters with adjustable min/max values



- Remote operating pendant
- Safety alarms
- Interface to data acquisition systems (optional)
- Multi fuel (optional)

JET KOTE® III OFFERS THE FOLLOWING FUEL SELECTIONS:

- Hydrogen
- Natural Gas
- Propylene
- Propane
- Ethylene



JET KOTE III

JK® Powder Designation	Description
JK112	88% Tungsten Carbide/12% Cobalt (Fine WC)
JK112H	88% Tungsten Carbide/12% Cobalt (Fine WC)
JK114	88% Tungsten Carbide/12% Cobalt (Coarse WC)
JK117	83% Tungsten Carbide/17% Cobalt
JK119	91% Tungsten Carbide/9% Cobalt
JK120H	Tungsten Carbide/10% Cobalt/4% Chromium Hydrogen
JK120P	Tungsten Carbide/10% Cobalt/4% Chromium Propylene
JK122	Tungsten Carbide/10% Cobalt/4% Chromium (Fine WC)
JK125	Tungsten Carbide and Chromium Carbide/6% Nickel
JK135	75% Chromium Carbide/25% (80%Ni/20% Cr)
JK136	76% Chromium Carbide/24% Nickel
JK157	Stellite® 157
JK276	Nistelle® C-276
JK347	89% Nickel/6% Aluminum/5% Molybdenum
JK350	95% Nickel/5% Aluminum
JK513	316 Stainless Steel
JK514	410 Stainless Steel
JK531	Tristelle® TS-1
JK532	Tristelle® TS-2
JK533	Tristelle® TS-3
JK554	Tribaloy® T-400
JK557	Tribaloy® T-700
JK558H	Tribaloy® T-800 Hydrogen Fuel
JK558P	Tribaloy® T-800 Propylene Fuel
JK559	Tribaloy® T-900
JK571	Stellite® 21
JK572	Stellite® 12
JK573	Stellite® 31
JK574	Stellite® 1113
JK575	Stellite® 1
JK576	Stellite® 6
JK577	Stellite® SF 6
JK579	Stellite® 25
JK584	Deloro® 40
JK585	Deloro® 50
JK586	Deloro® 60
JK587	Deloro® 75
JK588	Deloro® 80
JK590	Nistelle® B
JK591H	Nistelle® C Hydrogen Fuel
JK591P	Nistelle® C Propylene Fuel
JK592	Nistelle® D
JK594	Nistelle® C-4C
JK596	Nistelle® 26
JK598	80% Nickel/20% Chromium
JK6153	50% Tungsten Carbide/50% Deloro 50
JK6189	90% Tungsten Carbide/10% Nickel
JK625	Nistelle® 625 Nickel Base Superalloy
JK706	Stellite® 706
JK712	Stellite® 712
JK718	Nistelle® 718 Nickel Base Superalloy



An ISO 9001/QS 9000 Certified Company

Jet Kote, JK, Stelcar, Stellite, Nistelle, Delcrome, Tristelle, Tribaloy, T-800 and Deloro are trademarks of Deloro Stellite, Inc.
Distributed by Astro Alloys Inc. Houston, Texas 1-877-937-3838

Stellite Coatings

Customer Service
1201 Eisenhower Dr. North
Goshen, IN 46526

Tel: 800-235-9353
574-534-2585
Fax: 574-534-3417

Products may vary slightly from what are shown due to continual product improvements.
Specifications subject to change without notice.