

Saint-Gobain Coating Solutions

Technical Bulletin

Saint-Gobain #108, #109 Alumina Titania

Size Control

#108 Grain code 938715-45mic controlled by Microtrac

#109 Grain code 93895-30mic controlled by sieves and Coulter

Typical Chemical Compositions (%)

Al₂O₃ 59.0

TiO₂ 40.0

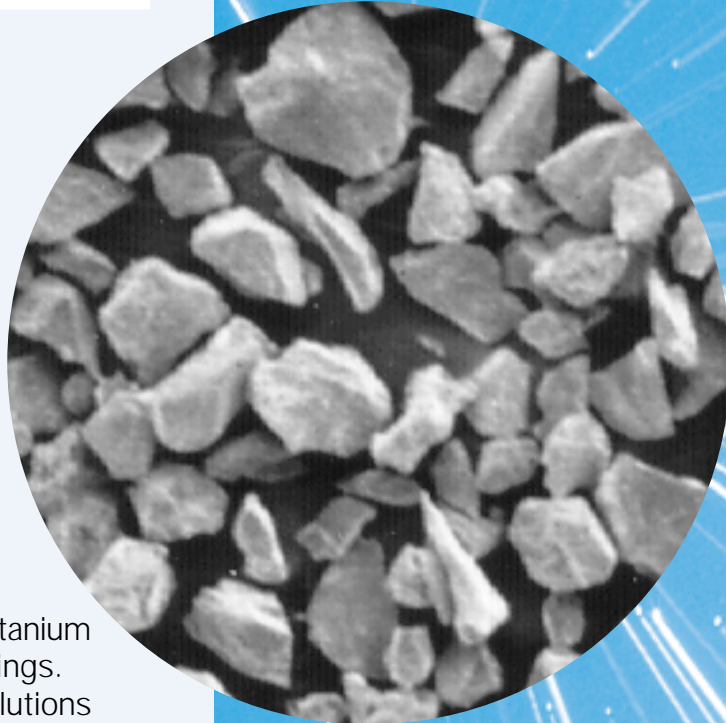
Other Oxides <1.0

Powder Characteristics

Saint-Gobain Alumina Titania is a fusion of aluminum and titanium oxide designed to produce smooth wear resistant coatings. The polished surfaces exhibit low wettability to dilute solutions of common acids. The powder is blocky shaped and has a blue-black color.

Typical Applications

Saint-Gobain Alumina Titania is used in the chemical and textile industries on bearing surfaces such as heater plates, godet rolls, thread guides, tension washers and creel rolls.



Ceramic Materials

1 New Bond Street, PO Box 15137, Worcester, MA 01615-0137

Tel: 508-795-5000 • Fax: 508-795-5868

The information contained in this document is believed to be accurate and reliable but is presented without guarantee or warranty on the part of Saint-Gobain Ceramics and Plastics Inc. Further, nothing present herein should be interpreted as an authorization or inducement to practice any patented invention without an appropriate license.

6100 - 108, 109