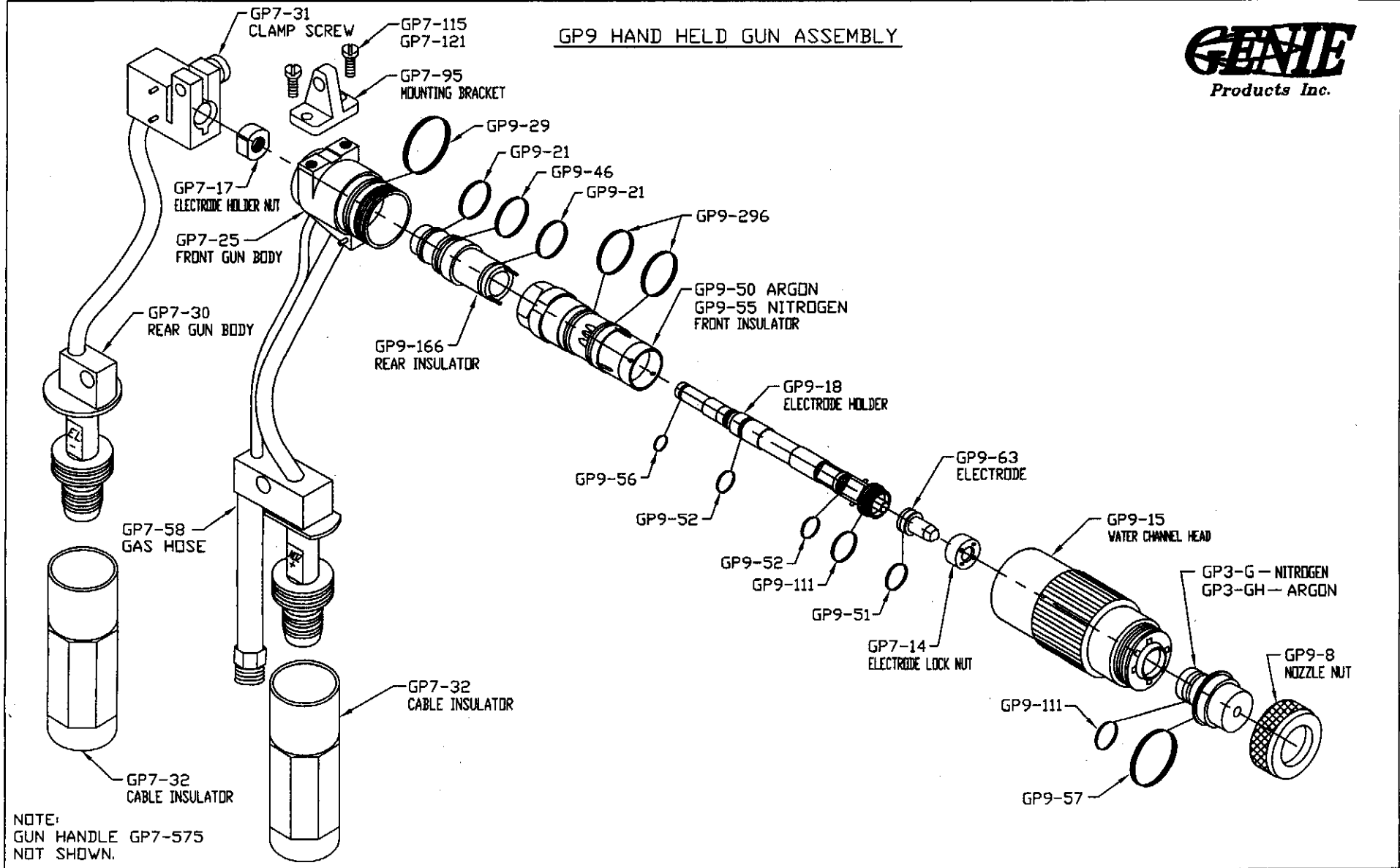
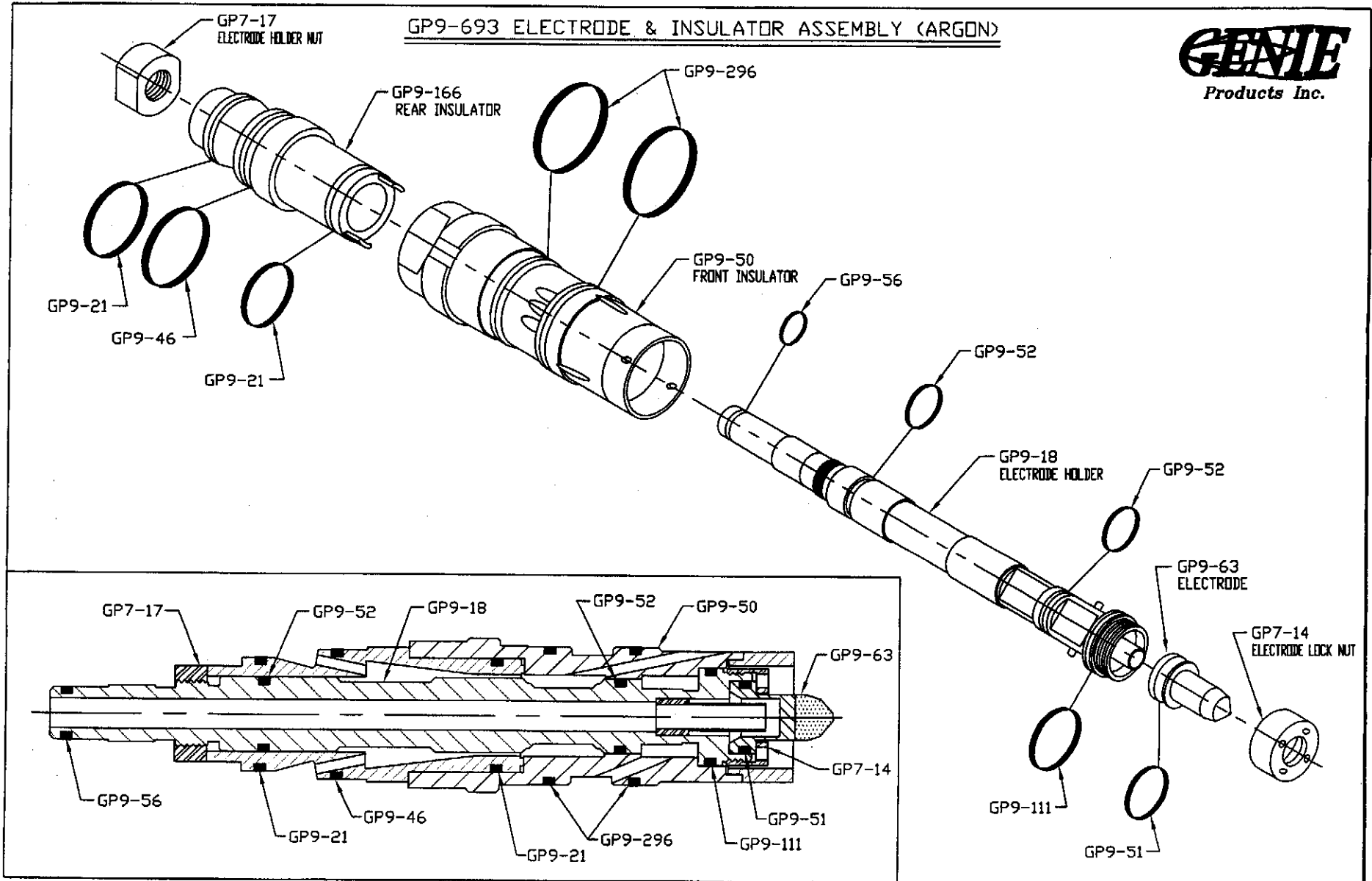


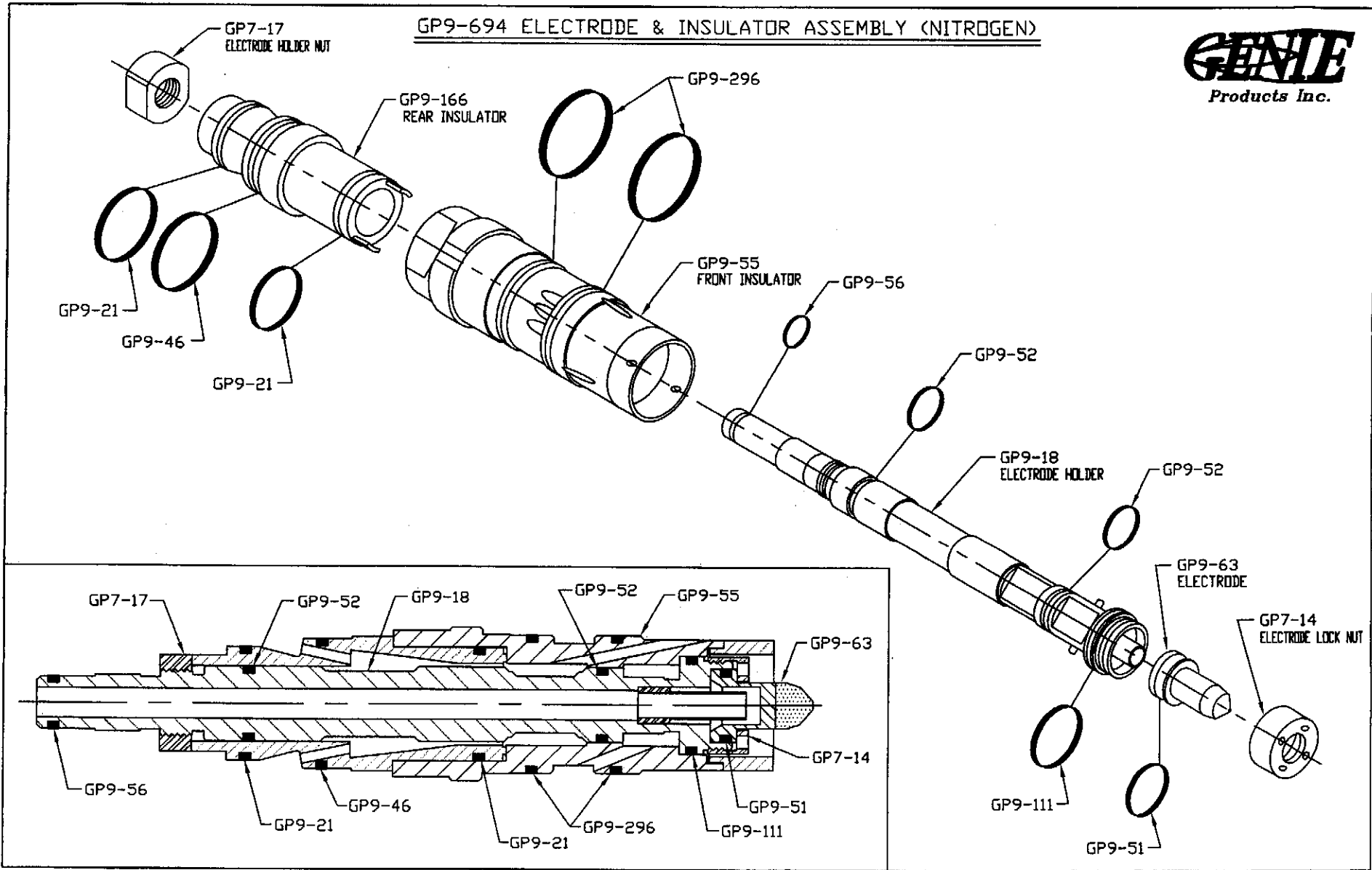
GP9 HAND HELD GUN ASSEMBLY

GENIE
Products Inc.





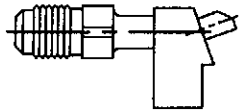
GP9-694 ELECTRODE & INSULATOR ASSEMBLY (NITROGEN)



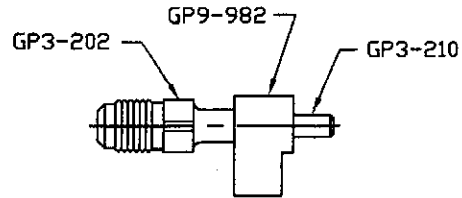


Products Inc.

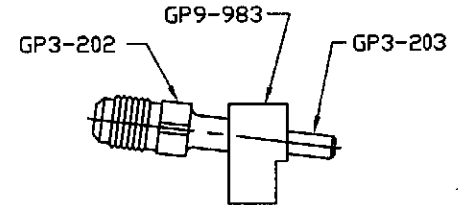
#1 POWDER PORT ASSY
PART NO. GP9-971



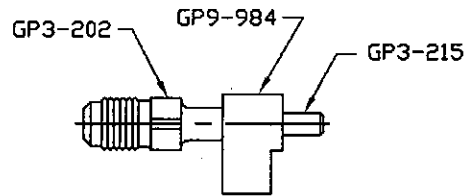
#2 POWDER PORT ASSY
PART NO. GP9-972



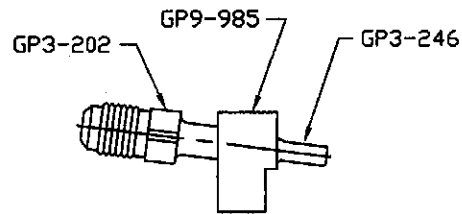
#3 POWDER PORT ASSY
PART NO. GP9-973



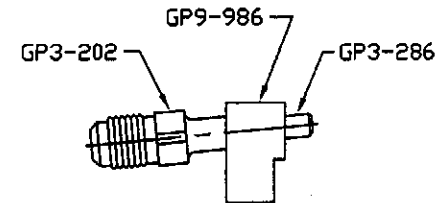
#4 POWDER PORT ASSY
PART NO. GP9-974



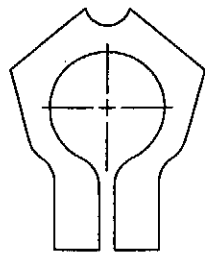
#5 POWDER PORT ASSY
PART NO. GP9-975



#6 POWDER PORT ASSY
PART NO. GP9-976

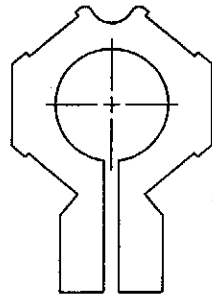


DUAL CLAMP NO AIR



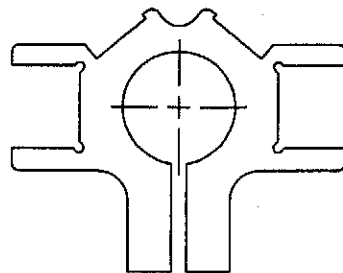
GP9-961

QUAD CLAMP NO AIR



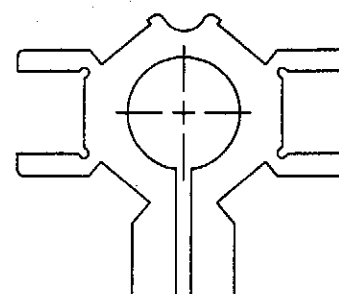
GP9-964

DUAL CLAMP WITH AIR



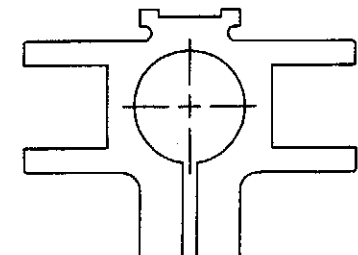
GP9-953

QUAD CLAMP WITH AIR

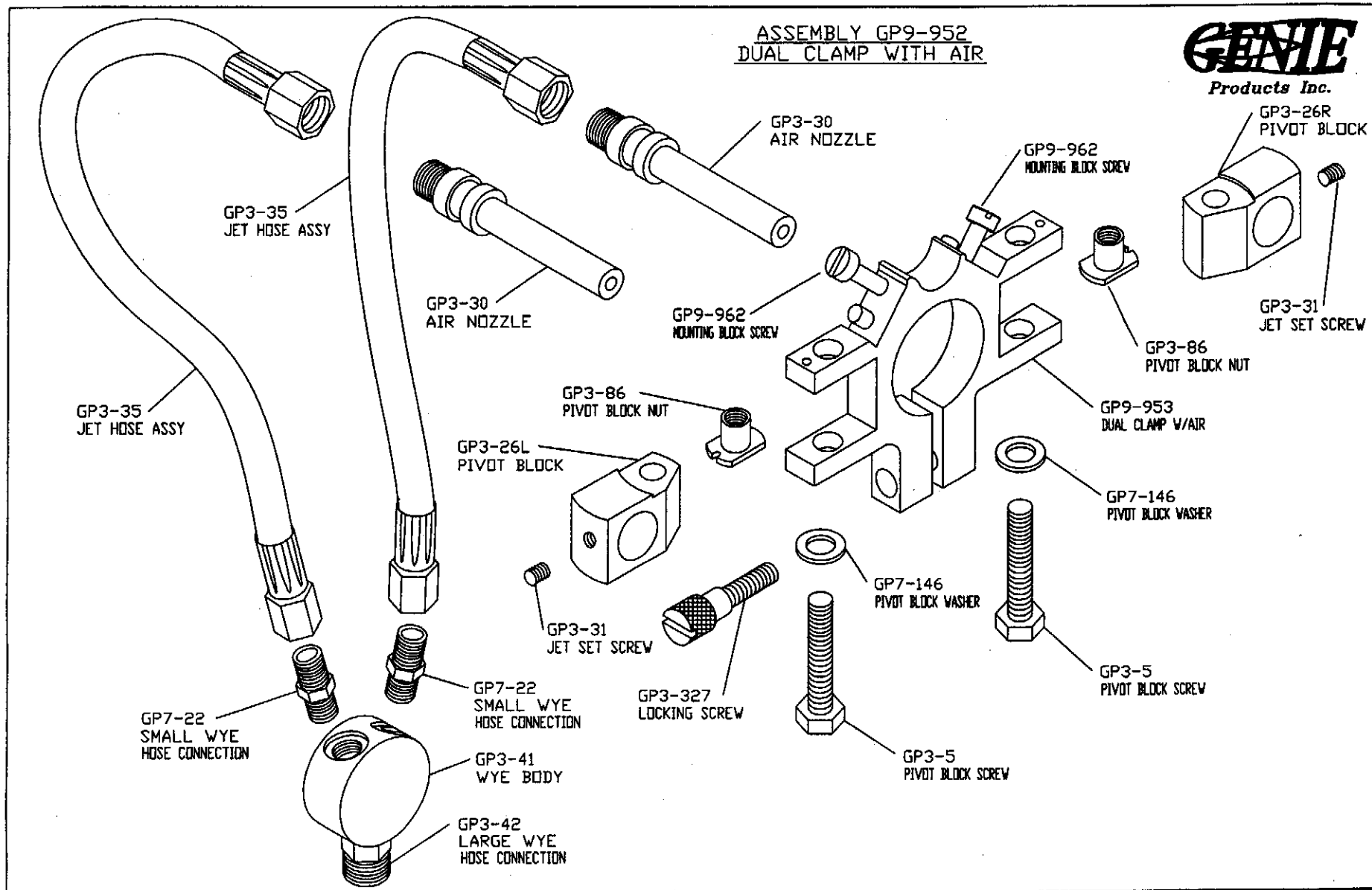


GP9-951

SINGLE CLAMP WITH AIR



GP9-954



9MB PLASMA GUN

<u>GENIE #</u>	<u>METCO #*</u>	<u>DESCRIPTION</u>
GP3-G	9MB7-G	"G" NOZZLE (STANDARD) (GP9-G)
GP3-GE	9MB7-GE	"GE" NOZZLE (STANDARD) (GP9-GE)
GP3-GH	9MB7-GH	"GH" NOZZLE (STANDARD) (GP9-GH)
GP3-GP	9MB7-GP	"GP" NOZZLE (STANDARD) (GP9-GP)
GP7-700	9MB700	"700" NOZZLE (STANDARD) (GP9-700)
GP9-703	9MB703	"703" NOZZLE (STANDARD)
GP7-704	9MB704	"704" NOZZLE (STANDARD) (GP9-704)
GP7-705	9MB705	"705" NOZZLE (STANDARD) (GP9-705)
GP9-706	9MB706	"706" NOZZLE (STANDARD)
GP7-707	9MB707	"707" NOZZLE (STANDARD) (GP9-707)
GP7-713	9MB713	"713" NOZZLE (EXTENSION) (GP9-713)
GP7-714	9MB714	"714" NOZZLE (EXTENSION) (GP9-714)
GP7-717	9MB717	"717" NOZZLE (EXTENSION) (GP9-717)
GP9-718	9MB718	"718" NOZZLE (EXTENSION)
GP9-8	9MB8	NUT (NOZZLE)
GP9-14	9MB14	NUT (ELECTRODE LOCK) (GP9-14)
GP9-15	9MB15	WATER CHANNEL HEAD
GP7-17	9MB17	NUT (ELECTRODE HOLDER) (GP9-17)
GP9-18	9MB18	ELECTRODE HOLDER ASSEMBLY
GP3-42	9MB20	HOSE CONNECTION (LARGE) (WYE) (GP9-20)
GP9-21	9MB21	"O"RING (REAR INSULATOR) (3)
GP7-22	9MB22	HOSE CONNECTION (SMALL) (WYE) (GP9-22)
GP7-23	9MB23	CABLE RECEPTACLE (GP9-23)
GP7-25	9MB25	FRONT GUN BODY ASSEMBLY (HAND HELD) (GP9-25)
GP7-29	9MB29	"O"RING (MACH MNT BASE & F.G.B.) (2) (GP9-29)
GP7-30	9MB30	REAR GUN BODY ASSEMBLY (GP9-30)
GP7-32	9MB32	INSULATOR (WATER COOLED CABLE) (GP9-32)
GP7-35	9MB35	WYE ASSEMBLY (GP9-35)
GP3-41		WYE (BODY ONLY) (GP9-35B)
GP7-37	9MB37	BASE ASSEMBLY (MACHINE MOUNT) (GP9-37)
GP7-38	9MB38	PLUG SCREW (GP9-38)
GP7-40	9MB40	SWITCH & CABLE ASSEMBLY (GP9-40)
GP7-45	9MB45	SCREW (POWDER PORT LOCK) (GP9-45)
GP7-46	9MB46	"O"RING (INSULATOR) (REAR) (3) (GP9-46)
GP9-49	9MB49	"O"RING KIT (SPARE FOR 9MB GUN)
GP9-50	9MB50	INSULATOR ASSEMBLY (FRONT) (ARGON)
GP9-50B		CERAMIC (2 HOLE SLANT) (CAP ONLY)
GP7-51	9MB51	"O"RING (ELECTRODE) (6) (GP9-51)

*Genie Products, Inc. has no business affiliation with Sulzer-Metco, Baystate, Sulzer Plasma Technik, Praxair, TAF A or Miller and their part numbers are included for reference only.

9MB PLASMA GUN

GENIE #	METCO #*	DESCRIPTION
GP9-52	9MB52	"O"RING (ELECTRODE HOLDER) (2)
GP9-55	9MB55	INSULATOR (FRONT-NITROGEN) (2 HOLE)
GP9-55B		INSULATOR (FRONT-NITROGEN) (6 HOLE)
GP9-55C		CERAMIC (2 HOLE) (STRAIGHT) (CAP ONLY)
		CERAMIC (6 HOLE) (STRAIGHT) (CAP ONLY)
GP7-56	9MB56	"O"RING (ELECT. HOLDER, GAS HOSE FTG)(2) (GP9-56)
GP3-197	9MB57	"O"RING (NOZZLE) (LARGE) (6) (GP9-57)
GP7-58	9MB58	HOSE ASSEMBLY (FRONT GUN BODY) (GP9-58)
GP7-61	9MB61	SCREW (GROUND WIRE CONNECTING) (5) (GP9-61)
GP9-63	9MB63	ELECTRODE
GP7-68	9MB68	SCREW (NAME PLATE SHOULDER) (4) (GP9-68)
GP7-69	9MB69	SCREW (NAME PLATE MOUNTING) (4) (GP9-69)
GP7-70	9MB70	SWITCH BOOT (GP9-70)
GP3-780	9MB80	DUAL POWD. FEED ASSY (W/AIR JET) (GP9-80)
GP3-781	9MB81	DUAL POWD. PORT CLAMP (W/AIR JET) (GP9-81)
GP3-26L	9MB82	PIVOT BLOCK (LEFT HAND) (GP9-82)
GP3-26R	9MB83	PIVOT BLOCK (RIGHT HAND) (GP9-83)
GP3-30	9MB85	AIR NOZZLE (GP9-85)
GP3-86	9MB86	NUT (PIVOT BLOCK CLAMP) (GP9-86)
GP9-95	9MB95	SUPPORT BRACKET
GP7-98	9MB98	WRENCH (LOCKING RING) (GP9-98)
GP7-104	9MB104	WRENCH (ELECTRODE SPANNER) (GP9-104)
GP7-111	9MB111	"O"RING (ELECT. HLDR., R.INSUL., NZL.-SM.)(6) (GP9-111)
GP7-115	9MB115	SCREW (SUPPORT BRACKET MOUNTING) (GP9-115)
GP7-121	9MB121	LOCK WASHER (SUPPORT BRACKET SCREW) (GP9-121)
GP9-122	9MB122	SCREW (ELECT. HOSE FITTING CLAMP)(2)
GP7-135	9MB135	ELECTRODE HOLDER CLAMP & HOSE FITTING (GP9-135)
GP7-138	9MB138	SCREW (ELECTRODE HOLDER CLAMP) (GP9-138)
GP3-35	9MB140	AIR NOZZLE HOSE (GP9-140)
GP7-142	9MB142	LOCKING RING ASSEMBLY (GP9-142)
GP7-165	9MB165	BASE ASSEMBLY (MACHINE MOUNT) (GP9-165)
GP9-166	9MB166	INSULATOR (REAR)
GP3-182	9MB182	VALVE / RING LUBE (GP9-182)
GP3-202	9MB202	POWDER PORT STEM (GP9-202)
GP3-203	9MB203	#3 TIP (GP9-203)
GP3-204	9MB204	#3 BLOCK (GP9-204)
GP7-208	9MB208	HOSE FITTING (PLASMA GAS) (GP9-208)
GP3-210	9MB210	#2 TIP (GP9-210)
GP3-211	9MB211	#2 BLOCK (GP9-211)
GP3-215	9MB215	#4 TIP (GP9-215)
GP3-216	9MB216	#4 BLOCK (GP9-216)
GP9-221	9MB221	LOCK WASHER (CABLE SPT STRAP SCREW)
GP3-245	9MB245	#5 POWDER PORT ASSEMBLY (GP9-245)

*Genie Products, Inc. has no business affiliation with Sulzer-Metco, Baystate, Sulzer Plasma Technik, Praxair, TAF A or Miller and their part numbers are included for reference only.

9MB PLASMA GUN

GENIE #	METCO #*	DESCRIPTION
GP3-246	9MB246	#5 TIP (GP9-246)
GP3-247	9MB247	#5 BLOCK (GP9-247)
GP3-285	9MB285	#6 POWDER PORT ASSEMBLY (GP9-285)
GP3-287	9MB287	#6 BLOCK (GP9-287)
GP3-286	9MB288	#6 TIP (GP9-288)
GP9-295	9MB295	"O"RING (HOSE FITT. & MTG STUD ASSY) (3)
GP9-296	9MB296	"O"RING (FRONT INSULATOR) (3)
GP9-297	9MB297	"O"RING (WATER CHANNEL HEAD) (2)
GP3-350	9MB300	#4 POWDER PORT ASSEMBLY (GP9-300)
GP9-301	9MB301	CABLE SUPPORT STRAP ASSEMBLY
GP3-315	9MB315	SINGLE POWDER PORT CLAMP (NO AIR) (GP9-315)
GP3-320	9MB320	#1 POWDER PORT ASSEMBLY (GP9-320)
GP3-325	9MB325	#2 POWDER PORT ASSEMBLY (GP9-325)
GP3-327	9MB327	SCREW (MOUNTING) (GP9-327)
GP3-330	9MB330	#3 POWDER PORT ASSEMBLY (GP9-330)
GP3-331	9MB331	SWIVEL CONNECTOR (GP9-331)
GP7-335	9MB335	HOSE FITTING & MOUNTING STUD ASSEMBLY (GP9-335)
GP3-342	9MB302	DUAL POWDER PORT CLAMP (NO AIR) (GP9-342)
GP9-453	9MB453	SCREW (CABLE SUPPORT STRAP)
GP9-601-EL		CONNECTOR (ELECTRODE) (RIGHT ANGLE)
GP9-601-NZ		CONNECTOR (NOZZLE) (RIGHT ANGLE)
GP3-660	9MB660	SGL POWD. FEED ASSY (W/AIR JET) (GP9-660)
GP3-661	9MB661	SGL POWD. PORT CLAMP (W/AIR JET) (GP9-661)
GP7-670	9MB670	SCREW (CLAMP) (GP9-670)
GP7-671	9MB671	RING (CLAMP SCREW RETAINING) (GP9-671)
GP9-693	9MB693	ELECT. & INSUL. ASSEMBLY (ARGON)
GP9-694	9MB694	ELECT. & INSUL. ASSEMBLY (NITROGEN)
GP9-730A		NOZZLE ASSEMBLY
GP9-730B		INSERT
GP9-730C		NOZZLE SHELL
GP9-731A		NOZZLE ASSEMBLY
GP9-731B		INSERT
GP9-731C		NOZZLE SHELL
GP9-732A		NOZZLE ASSEMBLY
GP9-732B		INSERT
GP9-732C		NOZZLE SHELL
GP9-733A		NOZZLE ASSEMBLY
GP9-733B		INSERT
GP9-733C		NOZZLE SHELL
GP9-950	9MB950	QUAD POWD. FEED ASSY (W/AIR JET)
GP9-951	9MB951	QUAD POWD. PORT CLAMP (W/AIR JET)
GP9-952	9MB952	DUAL POWD. FEED ASSY (W/AIR JET)
GP9-953	9MB953	DUAL P. P. CLAMP (W/A JET) (9MB ONLY)
GP9-954	9MB954	SGL POWD. PORT CLAMP (W/AIR JET)
GP9-956	9MB956	SGL POWD. FEED ASSY (W/AIR JET)
GP9-960	9MB960	DUAL POWD. FEED ASSY (NO AIR JET)

*Genie Products, Inc. has no business affiliation with Sulzer-Metco, Baystate, Sulzer Plasma Technik, Praxair, TAFI or Miller and their part numbers are included for reference only.

9MB PLASMA GUN

<u>GENIE #</u>	<u>METCO #*</u>	<u>DESCRIPTION</u>
GP9-961	9MB961	DUAL POWD. PORT CLAMP (NO AIR JET)
GP9-962	9MB962	SCREW (MOUNTING BLOCK)
GP9-964	9MB964	QUAD POWD. PORT CLAMP (NO AIR JET)
GP9-965	9MB965	QUAD POWD. FEED ASSY (NO AIR JET)
GP9-971	9MB971	#1 POWDER PORT ASSEMBLY
GP9-972	9MB972	#2 POWDER PORT ASSEMBLY
GP9-973	9MB973	#3 POWDER PORT ASSEMBLY
GP9-974	9MB974	#4 POWDER PORT ASSEMBLY
GP9-975	9MB975	#5 POWDER PORT ASSEMBLY
GP9-976	9MB976	#6 POWDER PORT ASSEMBLY
GP9-982	9MB982	#2 MOUNTING BLOCK
GP9-983	9MB983	#3 MOUNTING BLOCK
GP9-984	9MB984	#4 MOUNTING BLOCK
GP9-985	9MB985	#5 MOUNTING BLOCK
GP9-986	9MB986	#6 MOUNTING BLOCK
GP7-H10	9MBH10	NOZZLE WATER- D.C. CABLE (15 FT) (GP9-H10)
GP7-H10-5		NOZZLE CABLE (5 FT) (GP9-H10-5)
GP3-798	9MBH11	ADAPTER (RIGHT HAND) (GP9-H11)
GP7-H20	9MBH20	ELECTRODE WATER- D.C. CABLE (15 FT) (GP9-H20)
GP7-H20-5		ELECTRODE CABLE (5 FT) (GP9-H20-5)
GP3-797	9MBH21	ADAPTER (LEFT HAND) (GP9-H21)
GP7-H30	9MBH30	NOZZLE WATER -D.C. CABLE (25 FT) (GP9-H30)
GP7-H40	9MBH40	ELECTRODE WATER-D.C. CABLE (25 FT) (GP9-H40)
GP7-H50	9MBH50	PLASMA GAS HOSE ASSEMBLY (15 FT) (GP9-H50)
GP7-H50-5		PLASMA GAS HOSE ASSEMBLY (5 FT) (GP9-H50-5)
GP7-H50-20		PLASMA GAS HOSE ASSEMBLY (20 FT) (GP9-H50-20)
GP7-H50-25		PLASMA GAS HOSE ASSEMBLY (25 FT) (GP9-H50-25)
GP7-H51	9MBH51	POWER CABLE CONNECTORS (NEG & POS) (GP9-H51)
GP7-H52	9MBH52	POWER CABLE CONNECTOR COVER (GP9-H52)
GP7-H141	9MBH141	NOZZLE POWER CABLE CONNECTOR (POS) (GP9-H141)
GP7-H217	9MBH217	ELECTRODE POWER CABLE CONNECTOR (NEG)(GP9-H217)
GP7-H119	9MBH119	POWER CABLE CONNECTOR COVERS (SET) (GP9-H119)
GP7-H100	9MBH100	HEAT RESISTANT CABLE COVER (12") (FLEX)(GP9-H100)
GP9-GUN-G		COMPLETE 9MB GUN WITH "G" NOZZLE
GP9-GUN-GE		COMPLETE 9MB GUN WITH "GE" NOZZLE
GP9-GUN-GH		COMPLETE 9MB GUN WITH "GH" NOZZLE
GP9-GUN-GP		COMPLETE 9MB GUN WITH "GP" NOZZLE
GP9-HHGUN-G		HANDHELD GUN ASSEMBLY WITH G NOZZLE
GP9-HHGUN-GH		HANDHELD GUN ASSEMBLY WITH GH NOZZLE

POWER CABLES AND POWDER HOSES CAN BE MADE TO YOUR REQUIRED
LENGTH.

*Genie Products, Inc. has no business affiliation with Sulzer-Metco, Baystate, Sulzer Plasma Technik, Praxair, TAF4 or Miller and their part numbers are included for reference only.