

Cold Shot Chillers



**RUGGED
DEPENDABILITY**

10,15 and 20 - Ton 2 Stage Air Cooled Portable Water Chillers



(15-TON UNIT SHOWN)

FEATURES

- Dependable Copeland Welded Hermetic Scroll Compressors
- Stainless Steel Brazed Plate Evaporators Vacuum Brazed with Copper
- Brass Pump Down Valves
- Large Copper Condensing Coil with Aluminum Fins
- Powder Coated, Louvered Protective Condenser Panels
- Strong Stainless Steel Centrifugal Pumps with Safety Fuses or Thermal Protection
- Oversized Magnetic Contactors
- Powder Coated Steel Frame and Welded Stainless Steel Reservoir

BENEFITS

- Long Life - Maintenance Free
- Compact Efficiency
- Allows for Field service without disassembly
- Easy Maintenance - Improved efficiency
- Rugged Protection while allowing for easy maintenance and wash down
- High Flow - Long Life - Dependable
- Rugged Dependability - Long Life
- Lifetime Warranty

Cold Shot Chillers

"ECONOMICALLY PRICED DEPENDABILITY"

TECHNICAL SPECIFICATIONS

CAPACITY ± 5% AT 50° LCWT/95° AMBIENT	10-TON 120,000 BTU/HR	15-TON 180,000 BTU/HR	20-TON 240,000 BTU/HR
MODEL	ACWC-120-E	ACWC-180-E	ACWC-240-E
COMPRESSORS	TANDEM HERMETIC SCROLL (2) 5 HP	TANDEM HERMETIC SCROLL (2) 7-½ HP	TANDEM HERMETIC SCROLL (2) 10 HP
EVAPORATOR	STAINLESS STEEL / COPPER BRAZED	STAINLESS STEEL / COPPER BRAZED	STAINLESS STEEL / COPPER BRAZED
FLUID CONNECTION	1-¼" IN NPT & 1" OUT NPT	2" IN NPT & 1-½" OUT NPT	2" IN NPT & 1-½" OUT NPT
FANS / CFM	2 / 6600	3 / 9900	3 / 9900
CONDENSER COILS	COPPER TUBE / ALUMINUM FIN	COPPER TUBE / ALUMINUM FIN	COPPER TUBE / ALUMINUM FIN
VOLTAGE/PHASE	208/230/3 460/3	208/230/3 460/3	208/230/3 460/3
MINIMUM CIRCUIT AMPS	50.5 27.3	87.5 46.3	103 48
DIMENSIONS (APPROX.)	61"L x 40"W x 75"H	84"L x 40"W x 75"H	84"L x 40"W x 75"H
WEIGHT	1700 LBS	1900 LBS	2000 LBS
PUMP-hp	1-½	2	3
PUMP OUTPUT	55 GPM @ 30 PSI	76 GPM @ 30 PSI	95 GPM @ 30 PSI
TANK SIZE	41 GAL	80 GAL	80 GAL
TANK CONSTRUCTION	304 SS	304 SS	304 SS

CONTROLS:

Two (2) Stage Electronic temperature controller with constant (set point/process temperature) LED readout on standard units.

REFRIGERATION COMPONENTS:

Efficient scroll compressors, sight glass/moisture indicators, balanced port expansion valves, filter driers, pump down valves, stainless steel/copper brazed plate evaporators, fan cycling head pressure controls.

PROCESS FLUID COMPONENTS:

Rugged stainless steel centrifugal pumps, bronze "Y" strainer with 20 mesh stainless steel screen, insulated stainless steel reservoir with shoe box lid.

SAFETY CONTROLS:

High/low pressure safety, freeze, low water flow safety with manual reset, internal overloads, thermal overloads or safety fuses for pumps and fan motors.

OPERATING TEMPERATURES:

Process fluid: 42°F to 70°F for standard units (20° to 70°F for low temp units)

Ambient air: 40°F to 115° for standard units (-20° to 115°F for outdoor units with low ambient modifications)

CONSTRUCTION:

All welded powder coated steel frame, powder coated louvered carbon steel cabinet, 5" Phenolic casters with ball bearings and grease fittings.

WARRANTY:

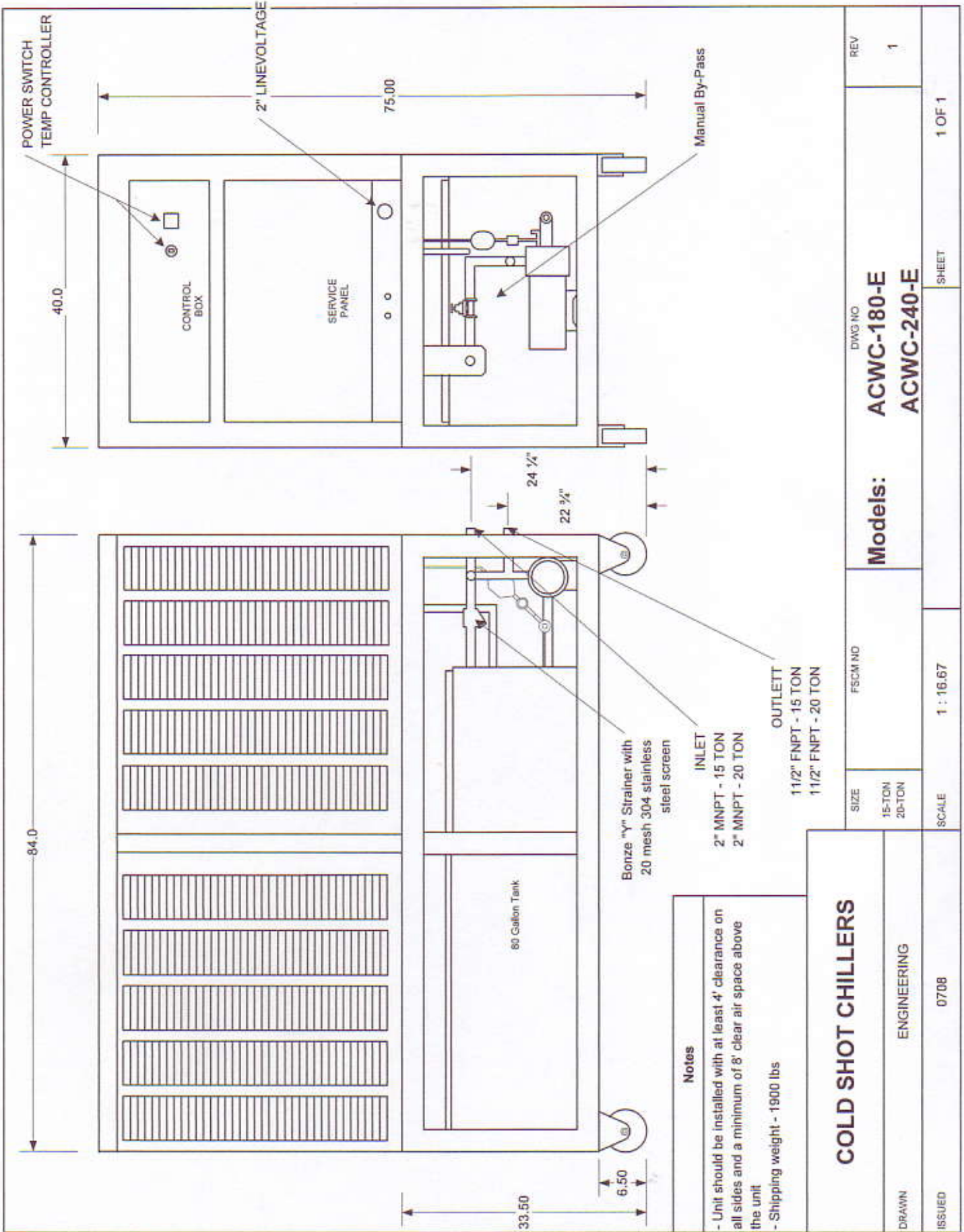
One Year Parts; Five Year Compressor

OPTIONS

- Full Metal Cabinet
- Outdoor Service
- Low Temperature
- Spare Parts Kit
- Flow Capacities (Pump Up-Grade)
- Split System
- Reverse-Flow
- Hot Gas By-Pass For Capacity Control
- Labor Warranty
- Manual By-Pass
- Low Ambient Modification
- Pro-Tec Coil Coating
- EZ Clean Filter

Compare our Price and Warranty • You May Pay More for Less!

Note: All specifications subject to change without notice.



COLD SHOT CHILLERS

SIZE	FSCM NO	DWG NO	REV
15-TON 20-TON		ACWC-180-E ACWC-240-E	1
SCALE	1 : 16.67	SHEET	1 OF 1
DRAWN	ENGINEERING		
ISSUED	0708		